

# SAMPHIRE BEACH

A small mostly rocky beach that is closer to [West Looe](#) than it may appear but is always quiet and secluded. At the western end of Portnaldar Bay it is possible to walk to [Old Mills Cove](#) (450m) and [Hendersick Beach](#) (600m) along the foreshore when the tide is out, or else along the Coast Path. To get to Samphire Beach from Looe you pass [Wallace Beach](#) (500m) and [Hannafore Beach](#) (1km).



At low tide looking west across Portnaldar Bay



**PL13 2DJ** - From the A387 at West Looe next to the bridge over the river, take the road to Hannafore and continue along Marine Drive as far as possible (3½kms) where it abruptly stops at the end of the residential development. There is ample roadside parking above [Wallace Beach](#). At the end of the road there is the Coast Path; the beach is 400m across a field, where just beyond is a sign to the access point on to the beach.



Sand, shingle and rocks



At high water it is mostly rocks and boulders



Stile to the beach



Sign from the Coast Path

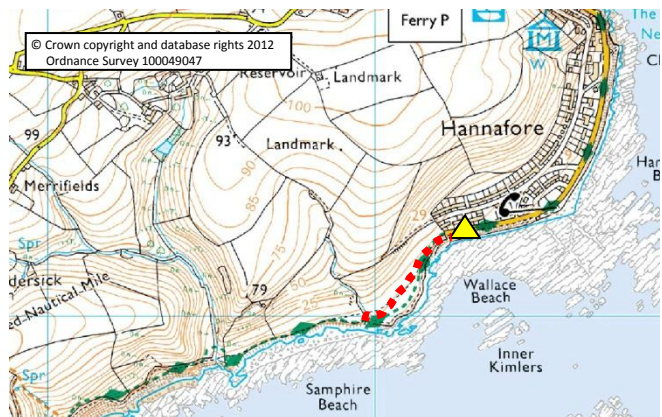
A good area of coarse grey sand mixed with shingle is exposed when the tide recedes. From the access point it is worth wandering along the beach as there are further patches of sand which are secluded and very sheltered.



There is no safety equipment. It is safe for swimming but it is best when the tide comes in and reaches the sandy areas to make entry into the water much easier. It is not a surfing beach. It is an excellent spot for snorkelling when the tide is high and conversely at low water there are numerous rock pools to explore.



There are no restrictions on dogs. There are no immediate facilities but there are toilets and a cafe at Hannafore along Marine Drive some 750m from the beach. There are shops, restaurants and pubs in Looe.



Location Map - Part of OS Explorer Map 107



There is usually water borne litter above high water. Water quality is believed to be good. Although it is not really a family beach it has great views of St George's Island some 650m away.