

FISHING COVE

and Castle Giver Cove

Sometimes known as Fisherman's Cove, this sandy beach nestles below 80m cliffs to the east of Navax Point. It faces north and can be in the shade even in summer unless the sun is high in the sky. It can be fairly sheltered from the westerly winds and even the extremes of the Atlantic swell. It is well known as a naturalist beach. The cliff path access is not too difficult but the drop on the seaward side of the path is not for those who suffer from vertigo. Castle Giver Cove is immediately adjacent to the west and can only be reached from Fishing Cove at low water.



Fishing Cove in winter shade at low water



TR27 5EG - Take the B3301 coast road from [Hayle](#) to [Portreath](#) and 2kms north of [Gwithian](#) village at the start of 'North Cliffs' there is a small parking area immediately on the left next to the road (capacity 20+cars), about 500m before reaching Hell's Mouth. Walk down the path that leads from the parking area and after 100m the Coast Path joins it on the right; continue on for a further 150m and on the right is a small path that leads to the cliff edge and winds its way down the cliff with steps on to the beach at the bottom. It is not a particularly difficult decent but needs to be undertaken with care as there is a point where it is suffering from erosion.



Steps down to the beach



Access path



Views of Fishing Cove



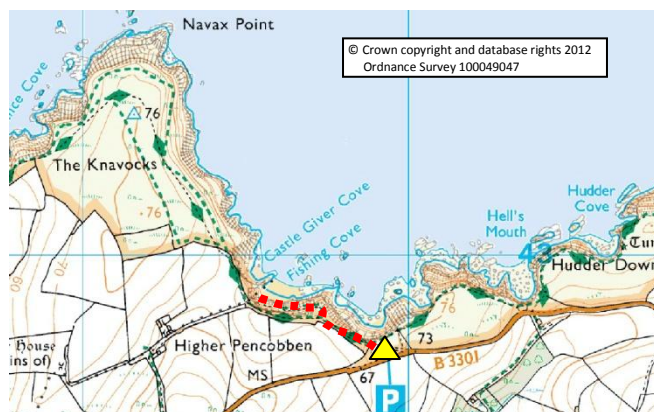
Usually both Coves have a strip of sand above high water in summer although sand levels often drop after winter storms and Castle Giver in particular can be quite stony. When the tide is out both beaches have a gently sloping sandy profile. It is easily possible to walk around to Castle Giver Cove either on sand or over the rocks but beware of the tides as there is only the one access off the beach at Fishing Cove.



There is no safety equipment at either beach. There are differing views on the safety of swimming but usually when swell and surf permit it can be undertaken with care on a rising high tide but not at low water. Conditions can be good for both bodyboarding and surfing at Fishing Cove but the narrowness of the inlet and rocks mean that care has to be taken. Snorkelling can be quite good when calm conditions prevail in summer although. There are rock pools at either side of both beaches.



Dogs are permitted. The nearest facilities are at [Godrevy](#) on the road to [Gwithian](#) (cafe 1.7kms and seasonal toilets 2.2kms) and a pub at Gwithian.



Location – Part of OS Explorer Map 102



The water quality is believed to be good. There is often a fair amount of water borne litter. This stretch of coast is well known for its seal populations. They are often found at both Coves but more especially at Mutton Cove a short walk around Navax Point (also known as The Knavocks).