

BACKWAYS COVE

A rocky cove that is close to [Trebarwith Strand](#) and somewhat unusual in that the upper part of the inlet has been subject to former slate quarrying activities creating a 'gorge' shaped access along the stream bed into the cove and shingle and stone beach.



The rocky inlet at low water

  **PL34 0HB** - From Camelford on the A39, take the B3266 signposted to Tintagel and after 2.7kms the B3263 (again signed for Tintagel). After 3.5kms turn left to [Trebarwith Strand](#); follow the road down the valley for nearly 2kms and there is a large car park on the right (capacity 130 cars). There is smaller car park nearer the Trebarwith Strand beach (capacity 45 cars) and a little roadside parking (about 17 spaces). To get to Backways Cove involves a strenuous walk. Head from the car parking to the beach at Trebarwith Strand and just before the beach shop and cafes on the left hand side is a road which leads to the pub and Port William. After 100m on the left is the Coast Path which rises steeply with countless steps up Dennis Point and wonderful views of Trebarwith Strand; once on the top of the Point follow the Path for a further 600m to the Cove which is at the bottom of a wide grassy valley. An alternative is to park at Trebarwith - **PL339DF** - which involves going 750m back up the valley from Trebarwith Strand



The inlet from the Coast Path



The stony slate beach



Path down to the Cove



The 'gorge' hewn from the slate

and then turning right for a further 500m. There is a public footpath signed from the road opposite Trebarwith Farm (next to a bench); there are a number of roadside parking places in the vicinity but care needs to be taken not to obstruct gateways. It is an easy walk down the valley (1km) to the Cove.



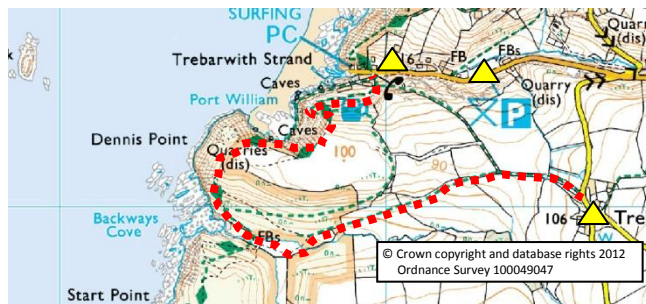
The upper part of the beach is a mixture of stone and shingle and is covered at high water. The lower part of the inlet consists of larger boulders and rocky ledges.



There is no safety equipment. Swimming is not advisable because of strong currents and submerged rocks. However, on a rising high tide when there is little or no swell swimming is possible if care is taken; this includes snorkelling around the inlet. It is not a surfing beach but there are a many rock pools at low water.



Dogs are permitted. The nearest facilities are at [Trebarwith Strand](#).



Location – Part of OS Explorer Map 111



Water quality is good but the stream is unknown. There are the ruins of a farm above the Cove and there is a story that the Cove is haunted.